



# **Norwich Western Link**

## **Environmental Statement**

### **Chapter 10: Biodiversity**

#### **Appendix 10.34: Air Quality Ecological Impact Assessment**

##### **Sub Appendix A: Figures and Background Information Part 1 of 5**

Author: WSP UK Limited

Document Reference: 3.10.34a

Version Number: 00

Date: March 2024



## Contents

Sub-Appendix A Figures and Background Information..... 3

### Figures

Figure A 1 Location of Designated Habitats and Areas of Ecological Importance  
scoped into the assessment..... 3

Figure A 2 Location of Veteran/Ancient Trees Scoped into The Assessment ..... 4

Figure A 3 2029 Gridded N deposition (N-dep) Impacts as percentage of critical load  
..... 5

Figure A 4 2044 Gridded N deposition (N-dep) Impacts as percentage of critical load  
..... 6

Figure A 5 2029 Gridded NH3 Impacts as percentage of critical level ..... 7

Figure A 6 2044 Gridded NH3 Impacts as percentage of critical level ..... 8

Figure A 7 2029 Transects N deposition Impacts as percentage of critical load ..... 9

Figure A 8 2044 Transect N deposition Impacts as percentage of critical load ..... 31

Figure A 9 2029 Transect NH3 Impacts as percentage of critical level ..... 53

Figure A 10 2044 Transect NH3 Impacts as percentage of critical level ..... 75

### Tables

Table A1 Critical Loads and Levels for full list of Sites obtained from APIS database  
..... 97

## Sub-Appendix A Figures and Background Information

**Figure A 1 Location of Designated Habitats and Areas of Ecological Importance scoped into the assessment**

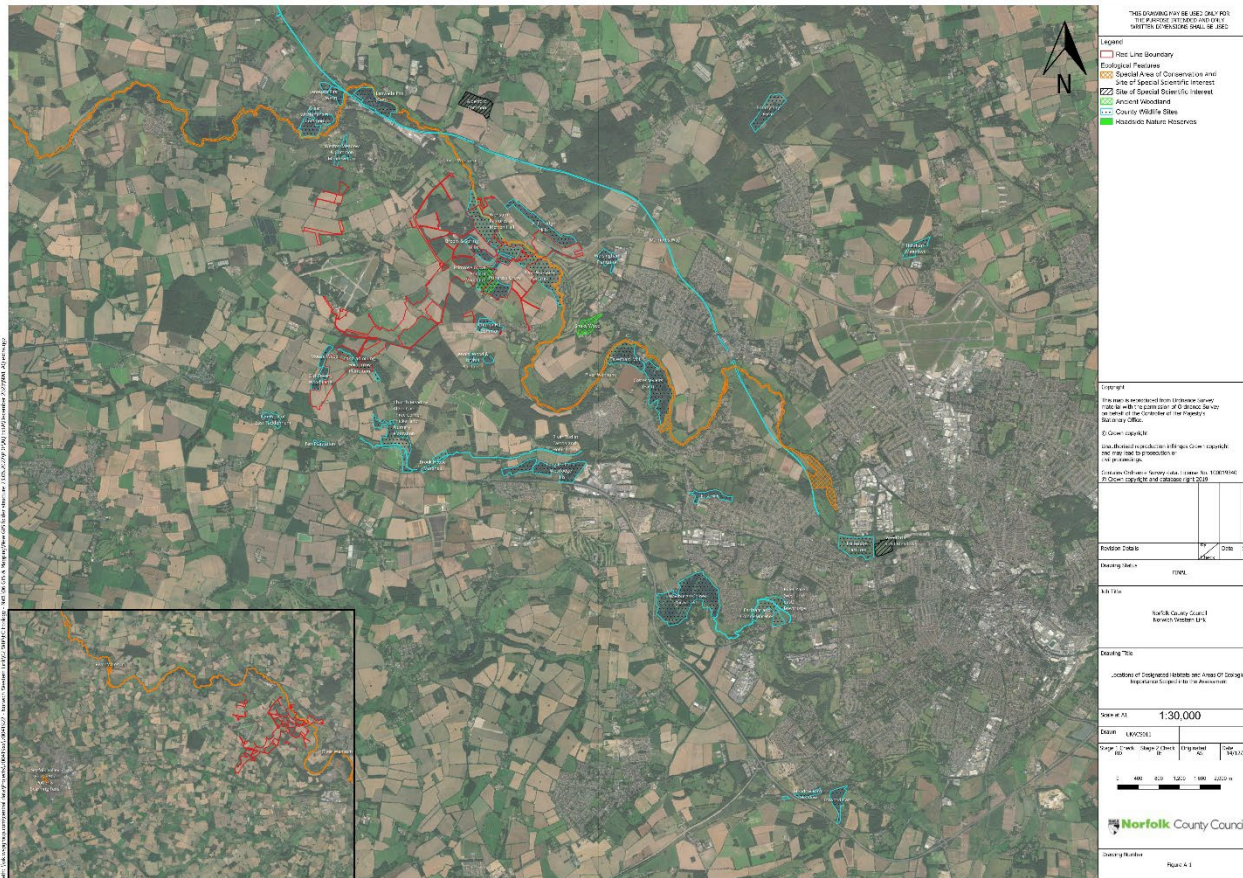






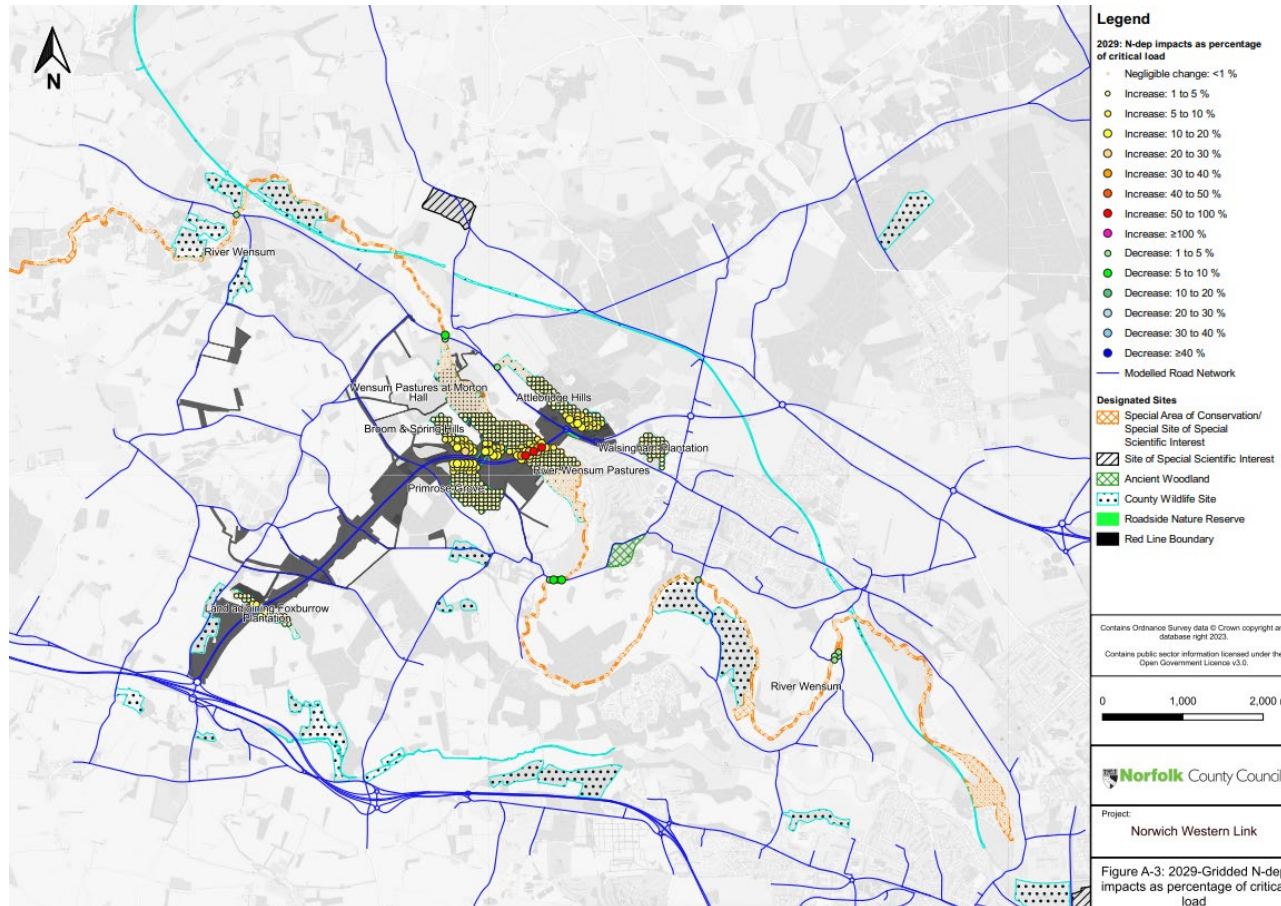
Figure A 2 Location of Veteran/Ancient Trees Scoped into The Assessment





Figure A 3 and Figure A 4 show nitrogen deposition impacts as a percentage of critical load at gridded points across the designated sites for 2029 and 2044 respectively.

**Figure A 3 2029 Gridded N deposition (N-dep) Impacts as percentage of critical load**



**Figure A 4 2044 Gridded N deposition (N-dep) Impacts as percentage of critical load**

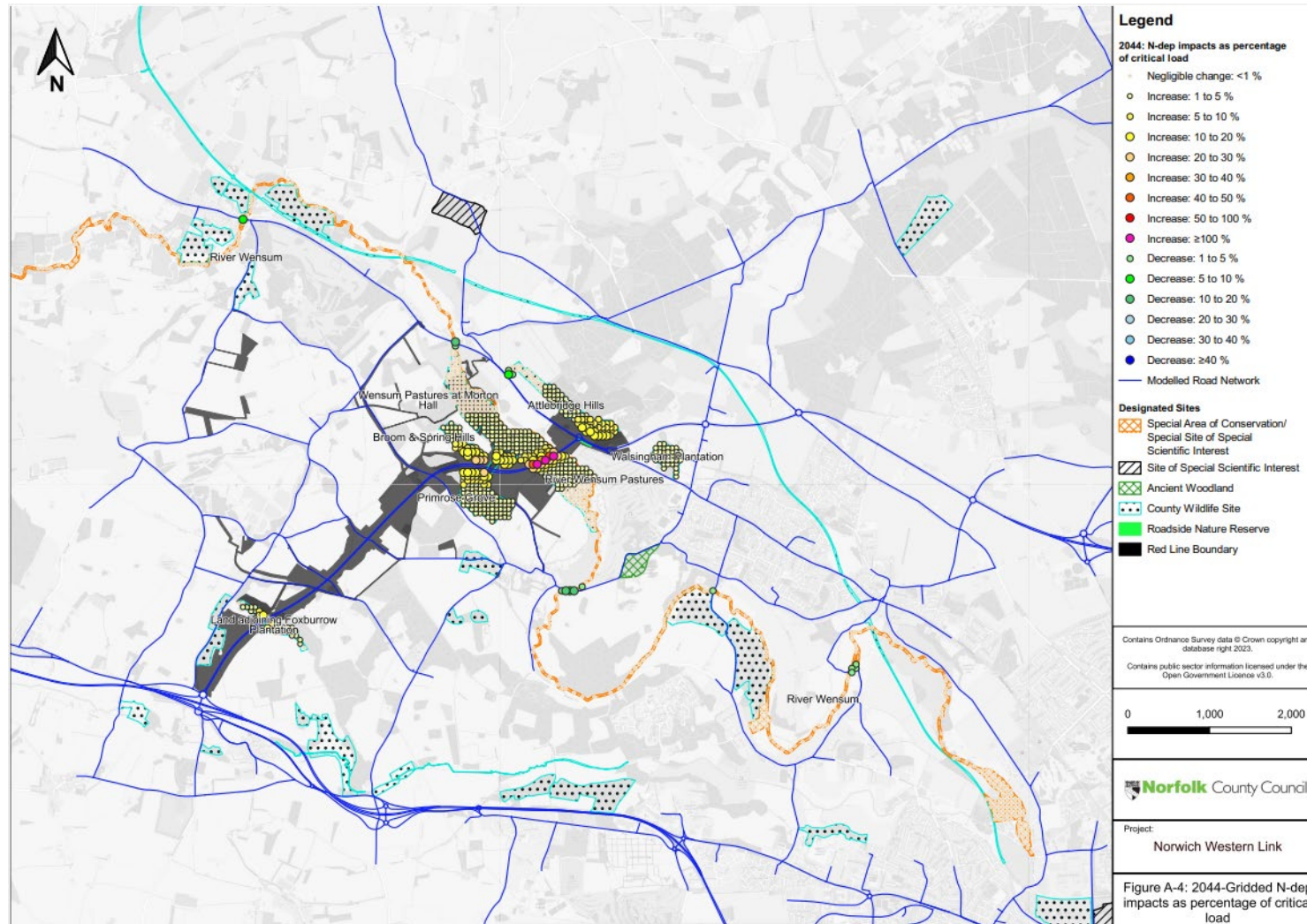
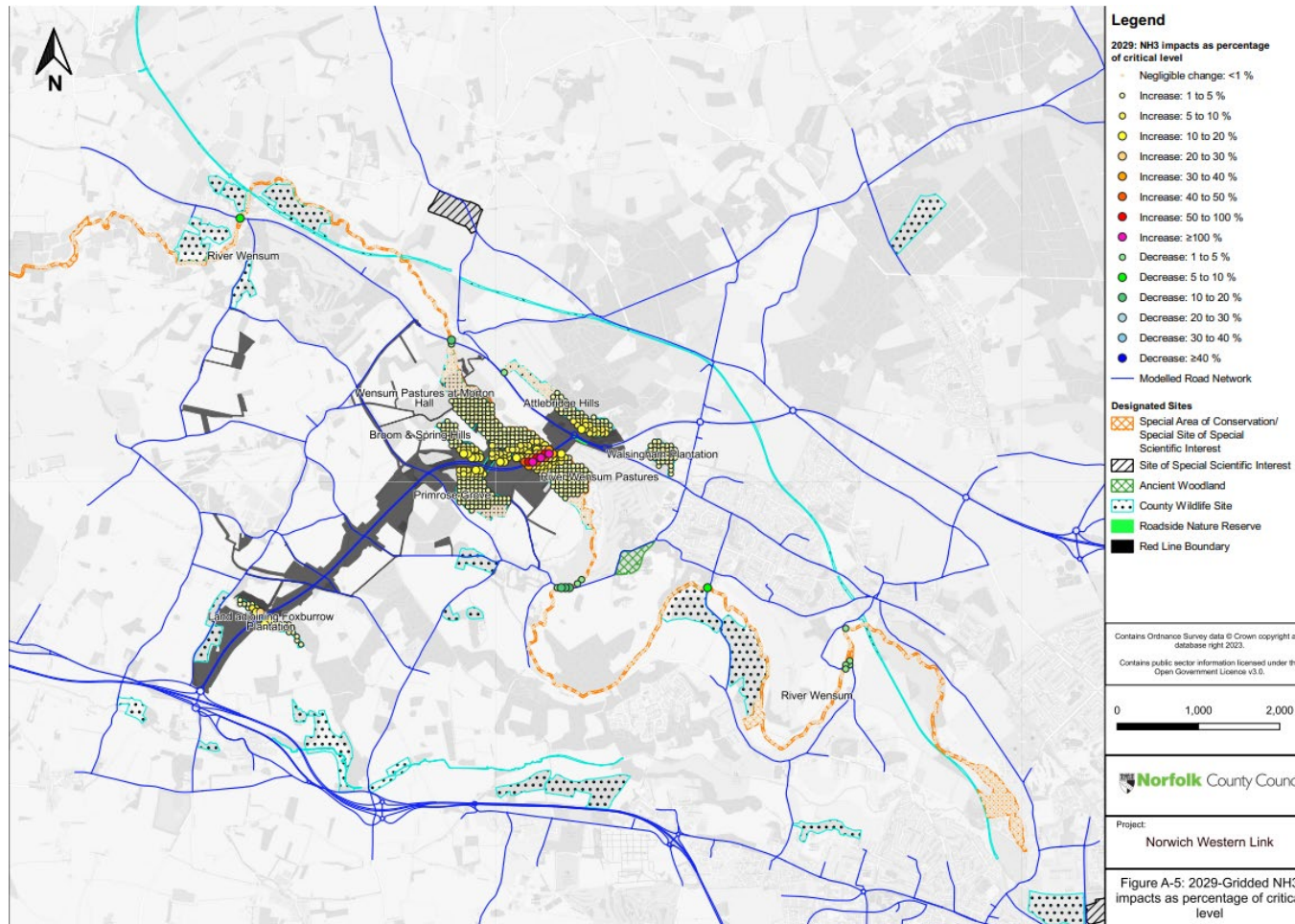




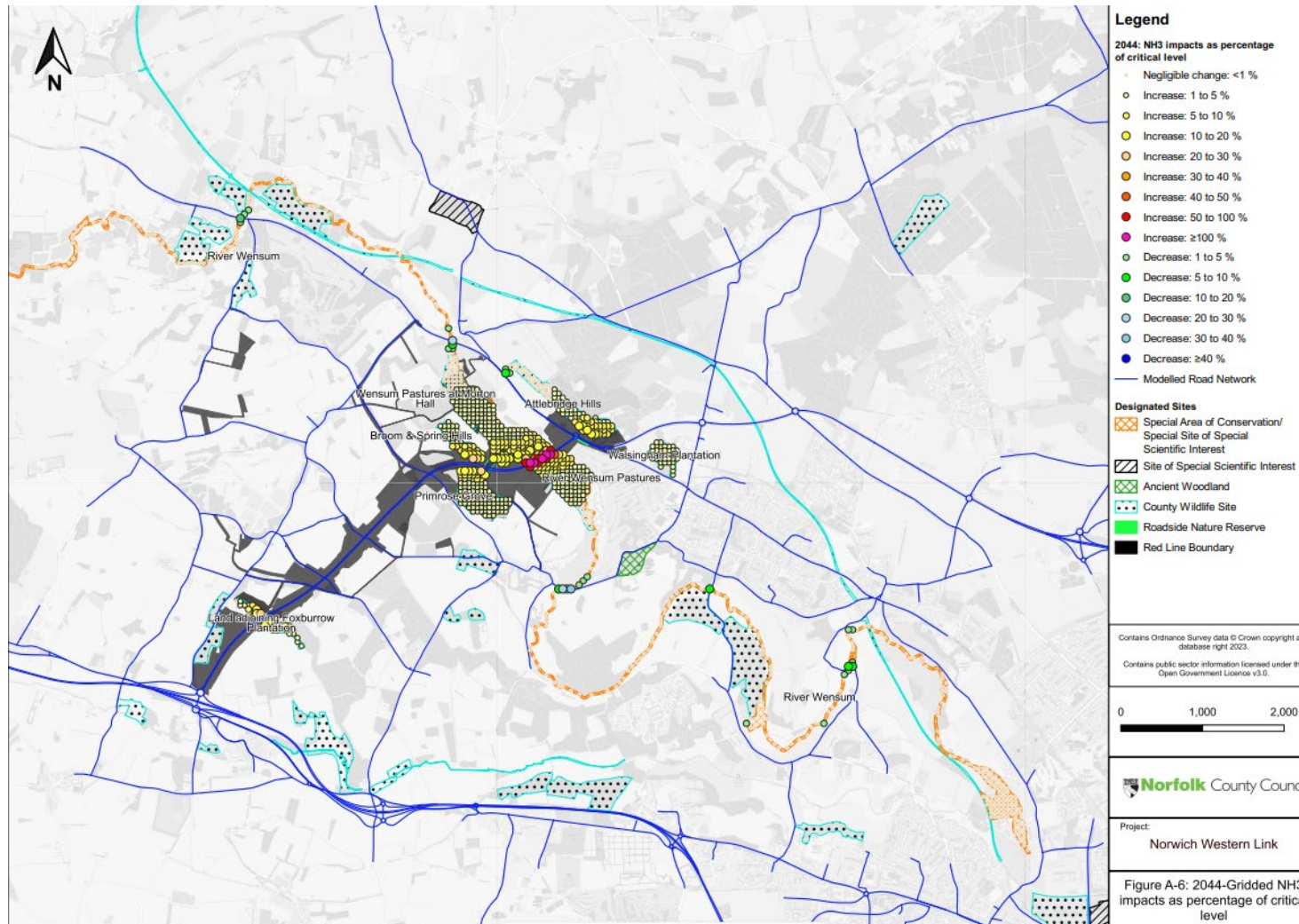
Figure A 5 and Figure A 6 show ammonia (NH3) impacts as a percentage of critical level at gridded points across the designated sites for 2029 and 2044 respectively.

**Figure A 5 2029 Gridded NH3 Impacts as percentage of critical level**





**Figure A 6 2044 Gridded NH3 Impacts as percentage of critical level**



**Figure A 7 2029 Transects N deposition Impacts as percentage of critical load**

